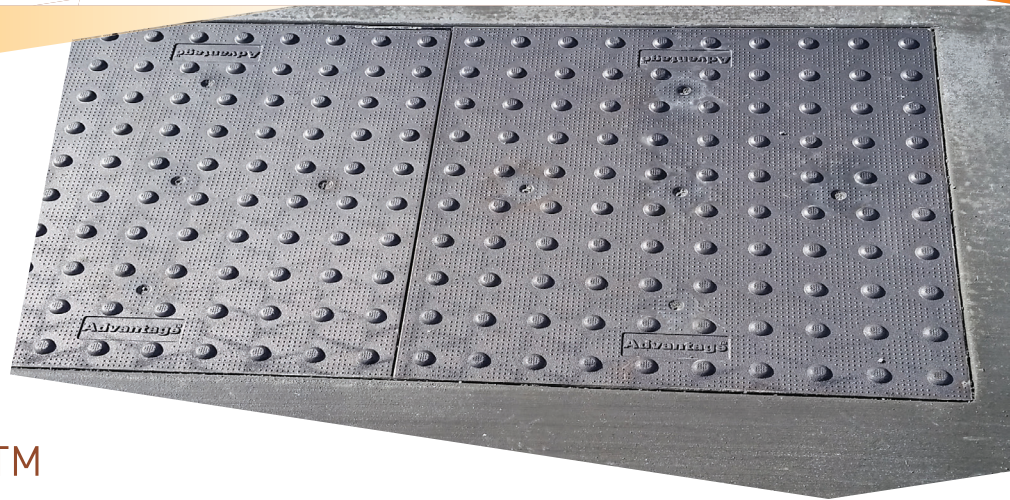


# Designed for Durability

## Engineered for Ultimate Strength™



Advantage<sup>®</sup> Cast Iron **Premier** Tactile Walking Surface Indicator (TWSI) plates are manufactured in strict accordance with ASTM A-48, Class 35B Grey Cast Iron. The Advantage<sup>®</sup> Cast In Place **Premier** System is lightweight with exceptional high strength, and utilizes the most advanced metallurgical Engineering Science and Technology to exceed the most stringent accessibility standards. This new self-threading corrosion-resistant anchor system allows the installer to position the anchors with ease and full control. Advantage<sup>®</sup> Cast Iron **Premier** is aesthetically pleasing, has exceptional longevity and incorporates integral texture for a permanent slip resistant surface.

Tactile Walking Surface Indicators (TWSI) products for the following and many more applications:

- Curb Ramps
- Pedestrian Crossings
- Transit Platforms
- Vehicular Passage Ways
- Parking Areas
- Top of Stair Landings

### COMPLIANCE

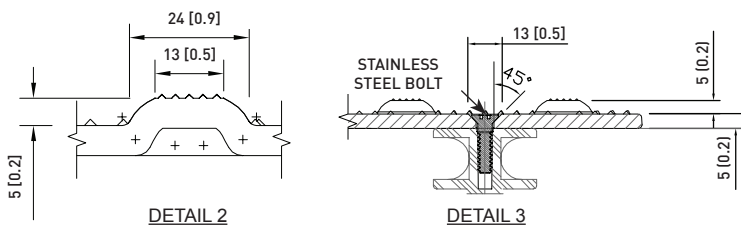
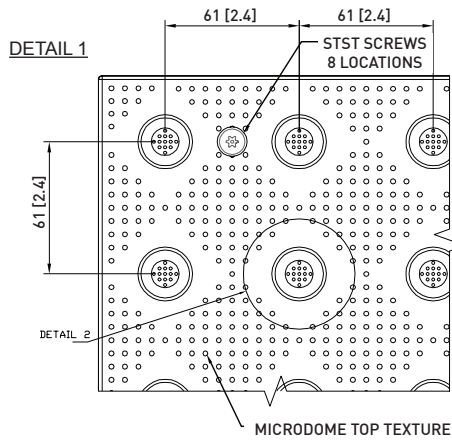
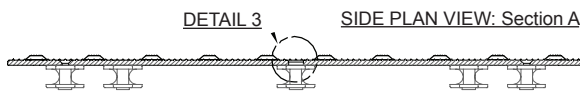
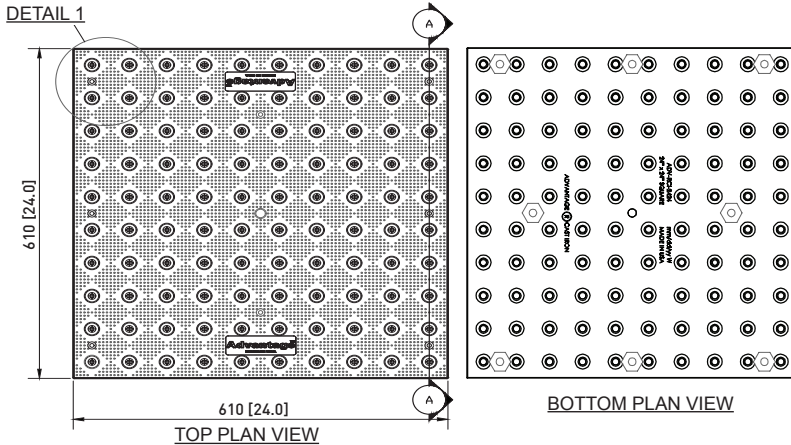
Kinesik Engineered Products Incorporated is in full compliance with Canadian Accessibility Codes. The full product range of Kinesik tactile walking surface indicators meet the most recent AODA, CSA, ISO, provincial and national building codes. Kinesik Engineered Products Incorporated is your one stop source for all tactile systems for internal and external applications. Only Kinesik provides a complete range of products designed for safety, convenience and code compliance.



### PRODUCT FEATURES

- Lightweight and easy to install
- Self-threading corrosion-resistant composite nylon anchors
- Available in various sizes and radii
- Engineered to endure the toughest conditions such as snow plows, overweight vehicular loads and heavy pedestrian traffic
- Maintenance-free natural patina
- ASTM A48, Class 35B Grey Cast Iron
- Can be recycled after its lifecycle
- 10 year manufacturer's warranty

**Advantage<sup>®</sup> Cast Iron Premier**



**KINESIK Engineered Products Incorporated**

2213 North Sheridan Way  
Mississauga, Ontario L5K 1A3  
Canada

Phone: 855.364.7763  
Fax: 800.769.4463  
www.kinesik.ca

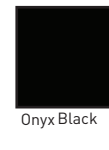
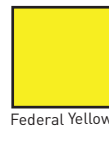
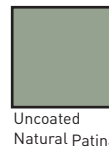
**PROFESSIONAL ASSOCIATIONS**

Kinesik is proud to be a member of the following organisations



**STANDARD COLOUR**

**POWDER COATED COLOUR OPTIONS**



**ADVANTAGE<sup>®</sup> CAST IRON SIZES**

Standard	Radial
24" x 12" (610 mm x 305 mm)	15' (4,572 mm)
24" x 18" (610 mm x 457 mm)	20' (6,096 mm)
24" x 24" (610 mm x 610 mm)	25' (7,620 mm)
24" x 30" (610 mm x 762 mm)	30' (9,144 mm)

**PLATE SPECIFICATIONS**

Standard Specification for Grey Iron Castings, Class 35B

ASTM Reference	Test Description	Value
ASTM C 1028	Static Coefficient of Friction	≥ 1.1 wet/dry
ASTM A 327	Impact Resistance	No damage @ 54 J
ASTM A 48	Gray Iron Castings	Class 35B
ASTM C 501	Abrasive Wear Index	> 55

